



Create your own custom Vein Care Settings

To create your custom exam preset you will want to decide which factory default setting you will want to base your exam off of.

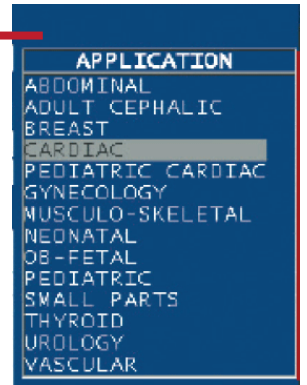
All Manufacturers create their default exams to optimize 2D, color and Doppler settings for that specific exam type. To create a custom preset you will need to consider what you are going to use it for. If you want to create a preset to scan deep vessels, you will want to pick the vascular factory exam. If you want to create a preset to scan superficial veins, you will want to select a factory defined exam such as Thyroid or Musculo-Skeletal.

To create a custom preset:

1. Press the START/End key



2. Choose an exam in the Application menu.



3. Edit the application by adjusting

1. Control Panel settings
- B-Mode gain settings, color scale, Doppler scale

2. Software Menu settings

Use the corresponding Software Keys to adjust the Software Menus

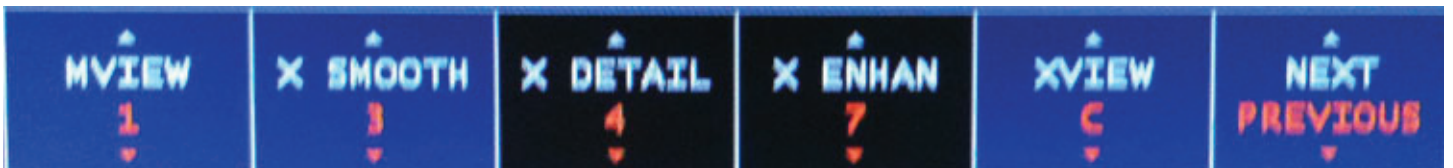
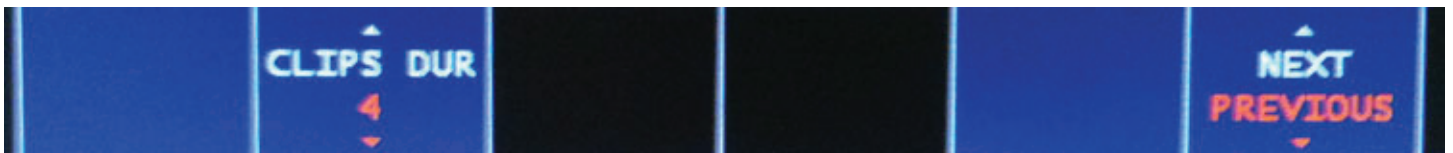
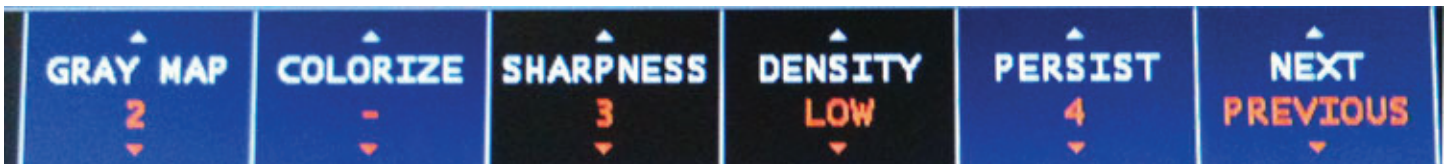


Software keys



Create your own custom Vein Care Settings

Software Menu settings cont. (*below are the settings UMI uses for Vein Care*)



When you have the image set-up the way you like it.

Press the PROBE/PRESET key



Use the trackball to move the cursor to select "NEW PRESET" located on the right side of the monitor.

Name your new preset.
Press Save.