



TURNING UP THE HEAT WITH A SONOSITE 180 PLUS



Insert the transducer on the bottom of case

>turn the flap handle to lock flat in place.





Turn on system

>press the power button on bottom left of handle (behind logo).





Press Patient

>left middle keyboard





Enter Patient Data: Press patient

- >press exam/patient**
- >press new patient**
- >Enter name of your practice**
- >leave some space with space bar then type name of patient.**





**5 soft keys on left of screen
perform functions listed to their
right**





Select/Change Exam: Press patient

- >press top soft key**
- >exam/patient**
- >press exam type**
- >press top key (breast) for optimal soft tissue settings**



Pressing done repeatedly brings you to live mode (active study screen).



Press Menu (top left next to depth key).

Top soft key toggles between resolution/general and penetration. General may be best.



Depth key

>toggles image size from 2.2 cm (largest screen) down to 7.1 cm smallest screen

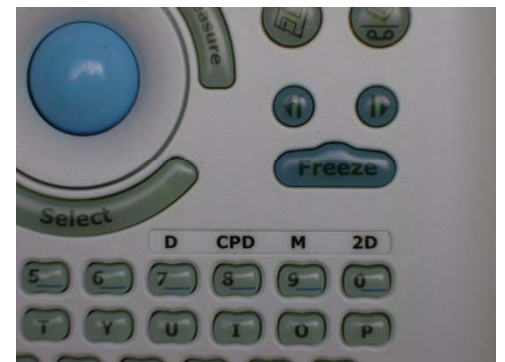
>Smaller the screen=better the resolution. Adjust to your preference





Obtain image

>press freeze button (lower right of trackball)





Press measure

- >move light green caliper to position
- >press select key (below trackball)
- >read measurement on top left screen





4th Soft key

>clears calipers allowing you to start measurement again



3rd Soft key measures area

- >press 2nd soft key to anchor point**
- >press select**
- >press 3rd soft key**
- >toggle trackball for area**



After freezing image

- >press text (above left of trackball)
- >cursor appears top left on screen
- >Type Patient name then diagnosis





6 Automatic text keys:

- >Press>patient**
- >Press system setup**
- >press video/printer**
- >press function key assignment**
- >enter 6 common diagnoses**
- >done**



For automatic text entry after freezing image

>press text

>hold down function key (bottom left keyboard)

>press 1 thru 6 and term will appear top left on screen



**Gain knobs on left adjust
brightness of screen.**

- >Near is top half**
- >Far is bottom half**
- >Overall screen is bottom gain knob**





Arrow: Press text

- >press arrow key
- >move arrow to desired location with trackball
- >press select
- >turn arrow position with trackball





Vascular Protocol: Press patient

- >exam patient**
- >exam type**
- >select vascular**
- >done>new patient**
- >enter data**
- >done**
- >only lowest gain knob works in color vascular**
- >adjust gain to fill vessel**



**While on CPD (color box #8)
press menu**

- >press top key to toggle to low**
- >press done**



Press CPD (8 key)

>color box comes up

>move with trackball to center vessel in box





Press # 7 (D)

>Press middle soft key

-15degrees 3 times until top left of screen read

-60 degrees-align center of line in middle of vessel

>press D again

>waveform appears





PRF and Baseline (2nd soft key adjust wave

**>turn bottom gain knob to right to brighten
waveform and turn volume up**



Press measure

>caliper to peak of wave=peak systolic velocity



**Before closing study press
File Save key (right of
measure) to save image: To
retrieve saved images press
patient**

- >press stored image**
- >press review images**

