

7 Working With Exams

Choosing an exam loads optimized presets for many image control settings, based on the anatomy to be scanned, the probe used, and the scanning mode. The exam presets also specify the measurements appropriate for the exam. You can use these optimized presets as is, or you can adjust any of the image control settings as necessary for the specific patient and the specific exam.

You can create additional presets to store sets of image control settings for specific kinds of exams. Customized presets can minimize the number of settings you must change each time you perform a specific ultrasound exam.

To work with exams, you must understand:

- [About Exams and Presets](#); see page 114
- [Opening an Exam](#); see page 116
- [Creating Custom Presets](#); see page 117
- [Deleting Custom Presets](#); see page 118

About Exams and Presets

The Terason uSmart3200T Ultrasound System provides predefined presets for all supported probes. Although several probe models may support the same exam types, the preset image control settings are unique to each probe model.

An exam includes predefined image control settings used for high, medium, and low frequencies. When you select a frequency range on the console, the Terason software loads other exam settings optimized for that frequency. When you select a different frequency, you need not reload the preset or load a different preset; the Terason software automatically updates the settings for the selected frequency.

The following table lists the preset exams available for each probe.

Terason Probes and Preset Exams

Probe	Exams	Presets	
4V2A	FAST	FAST	Cardiac screening
5C2A	Musculoskeletal	Hip	Spine
	FAST	FAST	

Terason Probes and Preset Exams (Continued)

Probe	Exams	Presets		
12L5A	Breast	Breast		
	Musculoskeletal	Shoulder Elbow Knee	Ankle and foot Wrist and hand	Hip Spine
	Nerve Block	Nerve deep	Nerve general	
	Thyroid	Thyroid		
	Vascular Access	Vascular access		
15L4	Breast	Breast		
	Musculoskeletal	Shoulder Elbow Knee	Ankle and foot Wrist and hand	Hip Spine
	Nerve Block	Nerve deep	Nerve general	
	Vascular Access	Vascular access		

The following table lists the image control settings that are preset for different modes.

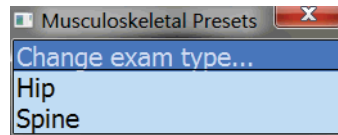
Exam Presets Provided with Scan Modes

Mode	Image Control Settings		
2D	Frequency Depth Focus Left/Right invert Up/Down invert Colorization	Gain Sector Width Smoothing Persistence Map Needle guide (when supported)	Dynamic range Noise rejection
M-Mode	Sweep Speed	Ultrasound cursor position	
PWD	Scale Sweep Speed Velocity display Wall filter	Invert Correction angle Sample volume size Gain Dynamic range	Noise Rejection Baseline Sound volume Update
CD	Scan area Scale Wall filter Color Invert	Color Gain Color Priority Color Persistence Color Baseline	Color Threshold Spatial Resolution and Frame Rate
Pwr and DirPwr	Scan area Scale Wall filter Directional Power (on/off)	Color invert Color Baseline Color Gain Color Priority	Color Persistence Spatial Resolution and Frame Rate

Choosing a Preset

Terason provides customized exam presets for scanning different anatomies. When you choose a preset, the Terason software loads image controls settings that are customized for that anatomy, the chosen scanning mode, and the connected probe.

To select a preset, choose it from the Presets menu by tapping it. If you do not see a preset name that corresponds to the kind of study you want to perform, you can create a custom preset. See [Creating Custom Presets](#) on page 117.



Choosing a Preset

The software displays only those exams supported by the connected probe. If you created any custom exams, they show at the bottom of the Exam menu.

Opening an Exam

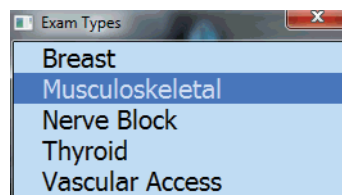
When you select an exam and preset, the Terason software loads the optimal scan settings for that preset, determined by the probe, the frequency, and the selected scan mode. If you select a different frequency or scan mode, the Terason software updates the scan settings.

You cannot open a preset when viewing a saved image.

To choose an exam type:

1. Tap the **Presets** button.
2. Tap **Change exam type...** in the Presets menu.

The Exam Types menu opens.



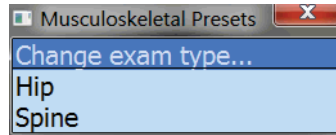
Exam Types Menu

3. Tap an **exam** in the Exam Types menu to select it.

You must also choose a preset from the Presets menu for the selected Exam type.

To select a preset:

1. Tap the **Presets** button.
2. Tap a **preset** in the Presets menu to select it.



Example Presets Menu

Creating Custom Presets

In addition to using the provided exam presets, you can create custom presets. Custom presets include your own specific modifications to the preset image control settings. You can then load the custom preset and skip setting the image control parameters. You can customize any preset to include your specific control settings.

You cannot change the default settings for a system preset. However, you can edit the image control settings of a system preset, then save it with a different name.

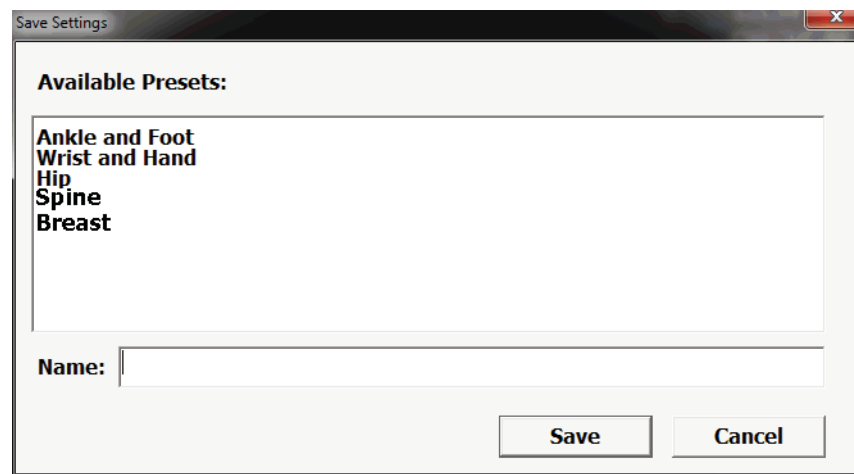
Creating a New Preset

Before you start, make sure that the probe you want to use for the new preset is connected. (If a different probe is connected, see [Switching Probes](#) on page 51 for instructions.)

To create a preset or to modify an existing custom preset, complete these steps:

1. Select the **system preset** or custom preset that has settings close to the one you want to create. See [Opening an Exam](#) on page 116.
2. Modify the image control **settings** as required. See [Working With Scan Modes](#) on page 68 for instructions.
3. Tap the **uSmart3200T** name at the top left corner of the screen.
4. Tap **Presets**.
5. Tap the **Save Settings** button at the top right corner of the screen.

The Save Settings window opens. It contains a list of presets, with system presets at the top and custom presets at the bottom.



Save Settings Window

6. Enter a name for the custom preset in the **Name:** field.

The name can be up to 16 characters long. If you are modifying an existing custom preset, make sure that name is in the field.

7. Tap **Save**.

The Terason software saves the image control settings.

The new preset is now available for use whenever the current probe is connected to the computer. If you connect a different probe, this new preset is not available.

Deleting Custom Presets

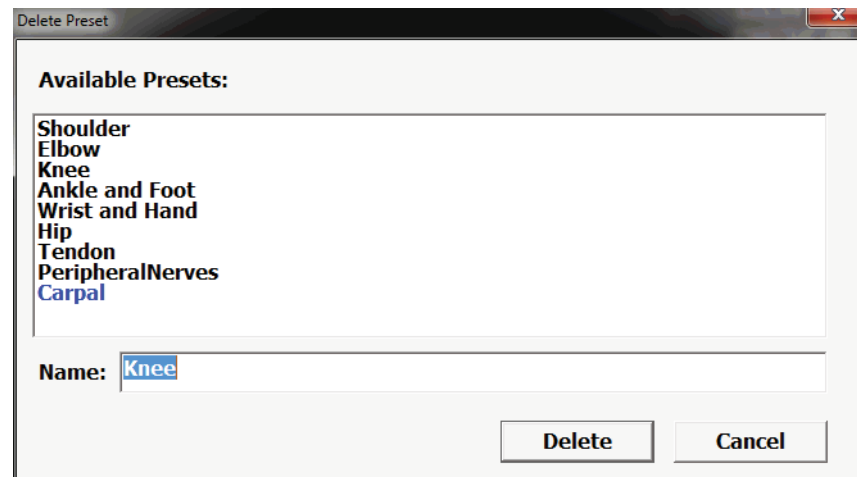
If you no longer want a particular preset, you can delete it. You can only delete custom presets; you cannot delete any of the system presets.

You cannot delete a currently-loaded preset. If the unwanted preset is loaded, select a different preset before you start this procedure.

To delete a preset, complete these steps:

1. Tap **Presets**.
2. Tap the **Delete** button.

The Delete Preset window opens



Delete Preset Window

3. Tap the preset that you want to delete from the list, and tap **Delete**.

The Terason software prompts you to confirm that you want to delete this preset.

4. Tap **Yes** to confirm the deletion.

If you select the active preset, a message box opens to tell you that you cannot remove the current preset. If that happens, tap **OK**, then open a different preset. Now you can delete the previous preset.