

9 Working With Setup Tools

The **Setup** window allows you to set defaults and control various functions of the Terason software. The Setup window tabs display sets of controls for defaults and other settings.

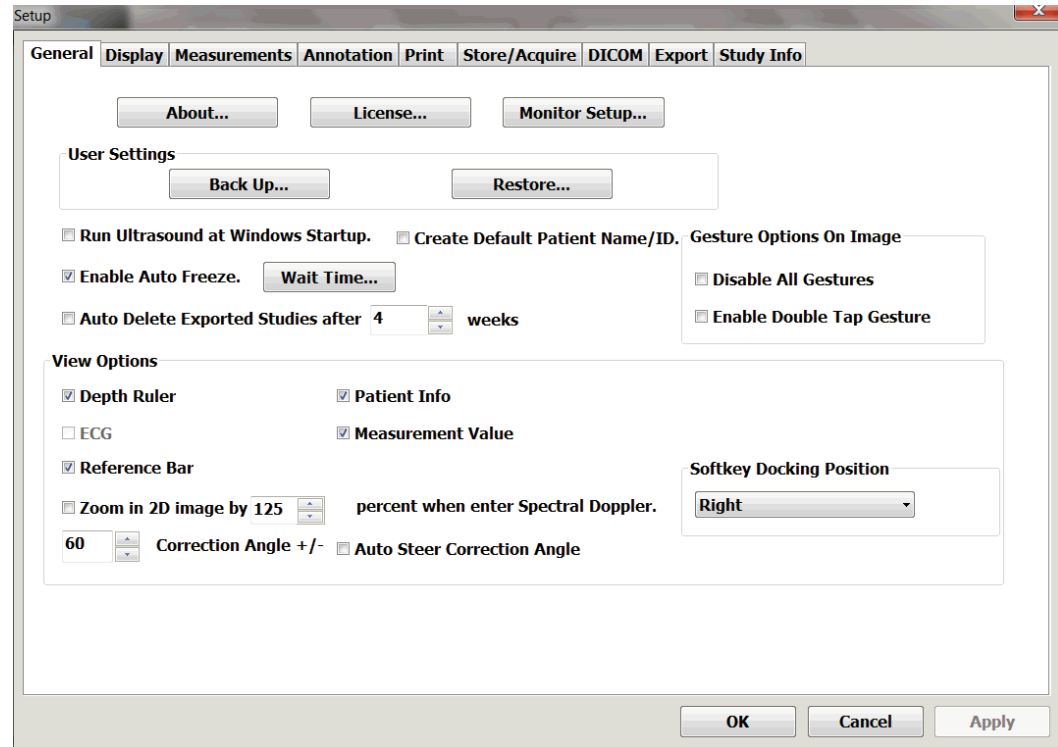
To access the Setup tools, tap the uSmart3200T name at the top left corner of the screen, then tap Setup.

The controls are described in these sections:

- [Using General Setup Controls](#), see page 130
- [Setting Export Defaults](#), see page 133
- [Setting Display Defaults](#), see page 136
- [Setting Measurement Defaults](#), see page 138
- [Using Annotation Setup Controls](#) on page 138
- [Setting Print Defaults](#) on page 139
- [Setting Storage and Acquisition Defaults](#) on page 140
- [Setting DICOM Defaults](#) on page 142

Using General Setup Controls

When you tap **Setup**, then tap the **General** tab, the Setup window offers several controls for different actions and defaults.



Setup General Window

About

The About button opens a message box that includes the version number of the Terason Ultrasound software.

License

The License button opens the Ultrasound License Registration window, where you can enable optional features you have purchased.

Monitor Setup

The Monitor Setup button opens a window where you can change the default monitor profile (useful if you're using a separate monitor), and run different tests on the selected monitor.

Startup

The Run Ultrasound at Windows Startup box is checked by default. This makes the ultrasound system start automatically when the computer is started. Unchecking the box means you have to manually start the Terason Ultrasound software.

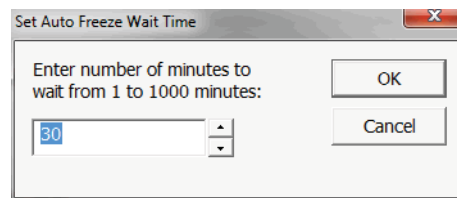
Auto Freeze

The Terason software lets you set a time value that shuts off power to the probe and freezes the scan if the system has been inactive for the specified period. This feature is especially useful when you run a tablet on battery power.

To set the Auto Freeze time, complete these steps:

1. Tap the **uSmart3200T** name at the top left of the screen.
2. Tap **Setup**.
3. On the Setup/General window, make sure the checkbox next to Enable Auto Freeze is checked.
4. Tap the **Wait Time...** button.

The Set Auto Freeze Wait Time window appears.



Setting the Auto Freeze Time

5. Tap the up and down arrows to select a different value.
6. Tap **OK**.

When the specified number of minutes elapses, the computer shuts off power to the probe and displays the following message:

Program has automatically suspended.

The Terason title bar changes to Terason - Suspended, to indicate that probe power is shut down. When you tap anywhere on the screen, the Terason software sends power to the probe and removes the message box.

Auto Delete Exported Studies

When you check this box, exported studies are automatically deleted from the ultrasound system when the selected number of weeks have passed since the study was created. If a study was created at a time that is further in the past than the number of weeks selected, it is immediately deleted when it is exported. You can select any number of weeks from 0 to 99.

Studies that have not been exported are not automatically deleted.

View Options

Several checkboxes that toggle different features of the Imaging window on and off are offered in the View Options area. Tap the check boxes to enable or disable the feature. When the box has a checkmark, the feature is enabled.

Depth Ruler sets whether or not to show the depth ruler.

Reference Bar sets whether the color doppler reference bar displays.

Patient Info sets whether the patient information is shown at the top of the Imaging window.

Measurement Value sets whether the values of measurements on the Imaging window are displayed.

TGC Display

You can choose whether and for how long the Time Gain Compensation display appears on the Imaging window.

- **Show** sets the TGC display to always show.
- **Hide** sets the TGC display to never show.
- **Time Out** sets the TGC display to show for a few seconds after an adjustment affecting TGC is made.

Reference Bar

This checkbox toggles the grayscale and color reference bars on and off.

Zoom in 2D image by

You can set the ratio used to zoom in on 2D images when entering Spectral Doppler modes. Click the up or down buttons to change the zoom ratio. You can also tap in the

number field, then tap the keyboard button  that appears, then enter the desired zoom ratio using the keyboard number keys.

Correction Angle

You can set the angle applied by the CA +/-60 button in PWD mode. Tap the up or down arrow to change the setting. You can also tap in the number field, then tap the keyboard button that appears, then enter the desired angle using the keyboard number keys.

When you change the angle setting, the number on the button changes to match. For instance, if you change the angle to 50, the button reads CA +/-50.

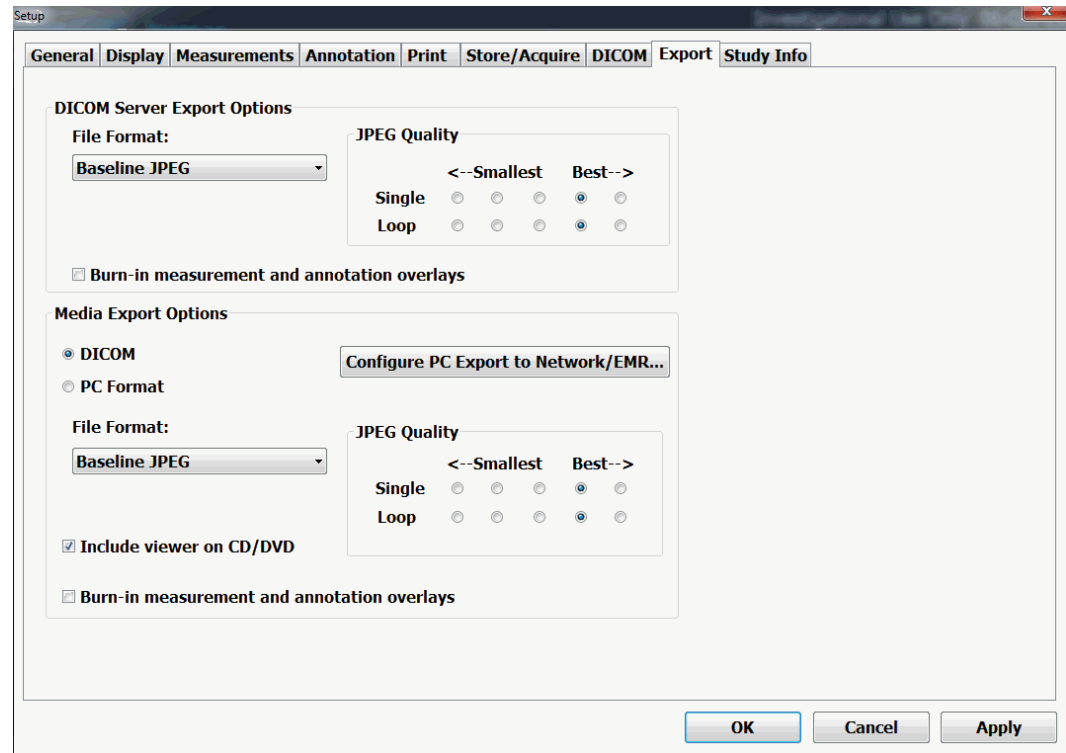
Auto Steer Correction Angle

This checkbox toggles the correction angle auto steer on and off.

Setting Export Defaults

When you tap **Setup**, then tap the **Export** tab, the Setup window offers several controls for different actions and defaults.

You can choose a different format for exporting images or loops to a CD, DVD, USB, or other network location.



Setup Export Window

Media Export Options

Choices in this section affect the format of files exported to a CD, DVD, or USB drive.

Selecting the **PC Format** radio button lets you choose a different format for export. You can choose any of the following formats:

- Palette Color (8-bit color)
- RGB (24-bit color)
- Palette Color RLE (Palette Color with run-length encoding applied)
- RGB, RLE (RGB with run-length encoding applied)
- Baseline JPEG

Selecting the **Include viewer on CD/DVD** checkbox includes a DICOM image viewer on CDs and DVDs burned with the Terason Ultrasound software. This lets DICOM loops play on systems that do not have the Terason software installed.

PC Export Options

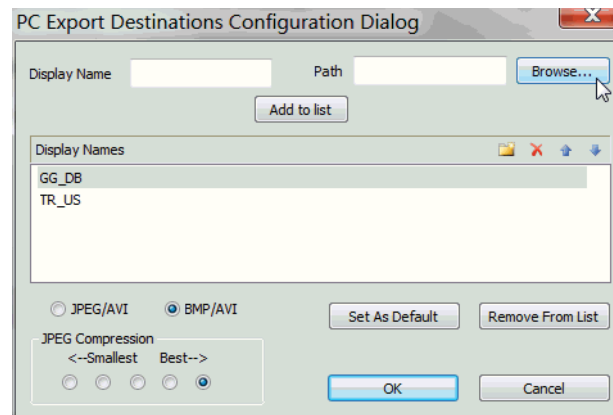
The PC Export button on the Setup/Export window opens a dialog box that lets you set defaults for exporting to other locations on a network. PC Export does not work with DICOM.

Locations added as export destinations appear in a drop-down menu on the Export Selection window. If more than one destination is added to the menu, you can select one as a default. If only one destination is added, or if a destination is designated the default, the Export button on the Export Selection window immediately sends the image to that destination. If more than one destination is added, and no destination is designated the default, tapping the Export button on the Export Selection window opens a notification box with a message saying you must choose a destination EMR.

To add a destination EMR:

1. Tap the **uSmart3200T** name at the top left of the screen.
2. Tap **Setup**.
3. In the Setup window, tap the **Export tab**.
4. On the Setup/Export window, tap the **Configure PC Export to Network/EMR** button.

The PC Export Destinations Configuration Dialog box opens.



PC Export Destinations Configuration Dialog Box

5. Tap **Browse...**

The system searches the network, and displays a list of possible destinations in a Select Path window.
6. Select the **export destination** from the Current Path list on the Select Path window.
7. Tap **OK**.
8. On the PC Export Destinations Configuration Dialog box, tap in the **Display Name** field, and enter a name for the destination.
9. Tap **Add to list**.

The destination is added to the Display Names list, and will appear in the drop-down menu on the Export Selection window.

To set defaults for PC Export:

1. To set a destination as the default, select it in the Display Names list, then tap **Set As Default**.
2. Select either **JPEG/AVI** or **BMP/AVI**.
3. Select the **JPEG compression** level.
4. Tap **OK**.

The selected defaults are set.

Burning Measurements and Annotations for Export

Some servers do not allow overlays on images. If the images you export are stripped of measurements and annotations, you must burn those into the images when exporting.

To configure export to burn measurements and annotations into images:

1. Tap the **uSmart3200T** name at the top left of the screen.
2. Tap **Setup**.

The Setup window opens.

3. Tap the **Export tab**.

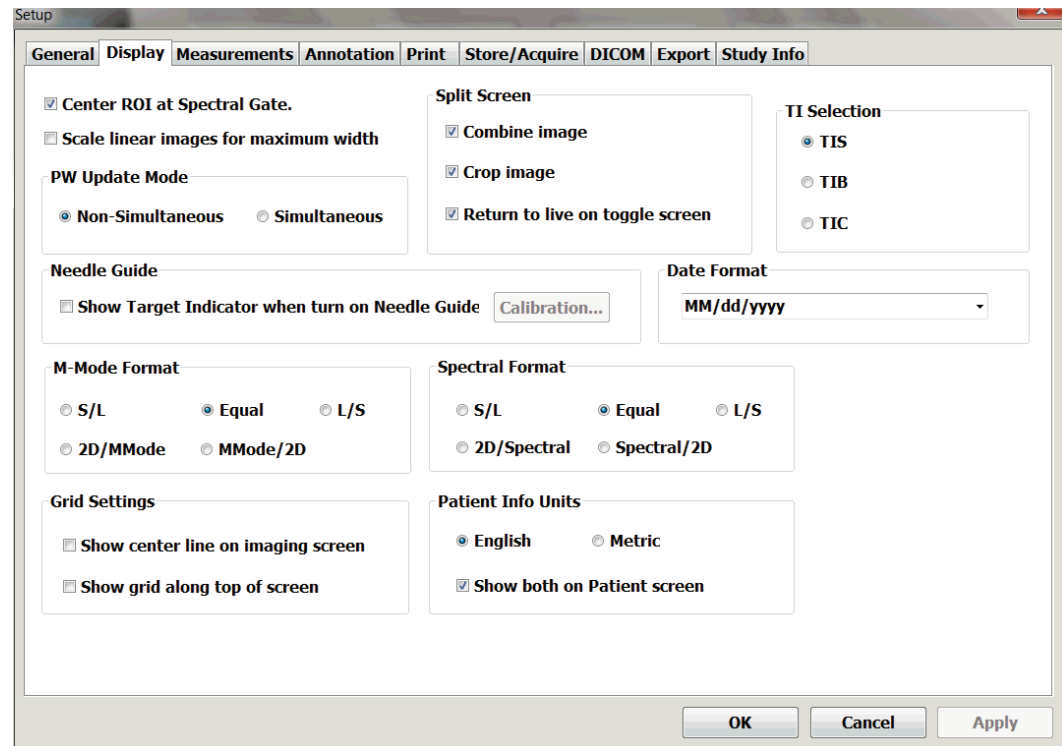
The Setup/Export window opens. (See [Setup Export Window](#) on page 133.)

4. Tap the **Burn-in measurement and annotation overlays** checkboxes.

Setting Display Defaults

When you tap **Setup**, then tap the **Display** tab, the Setup window offers several controls for different actions and defaults.

The Display tab on the Setup window controls how certain features of the Imaging window are displayed.



Setup Display Window

Return to live on toggle screen

The checkbox controls whether toggling between split screens makes the active screen live or not.

When the box is **unchecked**, toggling between the screens leaves them both frozen. Tapping the Freeze button makes the active window live. Toggling to the other screen and back freezes both screens again.

When the box is **checked**, toggling between windows makes the active window live, even if it was previously frozen using the Freeze button.

Center ROI at Spectral Gate

When this box is checked, the feature centers the region of interest around the spectral gate.

Scale linear images for maximum width

When this box is checked, the feature widens the display for shallow scans.

Patient Info Units

You can choose to have the height and weight values in patient information sets display as either Metric or English units. When you change from one to the other, the software automatically calculates the equivalent value in the new units. For example, if the patient's height was entered as 2 meters, when you change to English units, that value is changed to 6 feet 7 inches.

Update Mode

When they are selected, Spectral Doppler modes normally open updating both the Time Series display and the 2D display simultaneously. This is the default, and is the Simultaneous selection on the Setup Display window. Selecting Non-Simultaneous causes Spectral Doppler modes to open with the 2D display frozen.

Whichever radio button is selected, tapping the Update button toggles the 2D display between live and frozen.

Needle Guide

This section includes a checkbox that shows or hides the Target Indicator and a button that opens the Needle Guide Calibration window.

Needle guide calibration is used exclusively with the biopsy/medical procedures options. See [Calibrating Needle Guide Positioning for Biopsies](#) on page 126 for information on correcting the needle guide position.

M-Mode Format and Spectral Format

These radio buttons set the relative sizes of the 2D display and the Time-Series display on the Imaging window.

- **S/L** makes the 2D display half the height of the Time-Series display
- **Equal** makes the 2D display the same height as the Time-Series display
- **L/S** makes the 2D display twice the height of the Time-Series display

See [Resizing the 2D and Time-series Displays](#) on page 56.

TI Selection

This chooses the thermal index that is displayed on the scanning window. Refer to “General Description of Indices” in *Volume 2* of this guide for more information about thermal indices.

- TIS is the Soft Tissue index.
- TIB is the Bone index.
- TIC is the Cranial index.

Combine Image

Allows measurement across both images in split-screen mode.

Crop Image

When checked, this cuts the edges of trapezoidal or sector images in split-screen mode to increase the image size.

Return to live on toggle screen

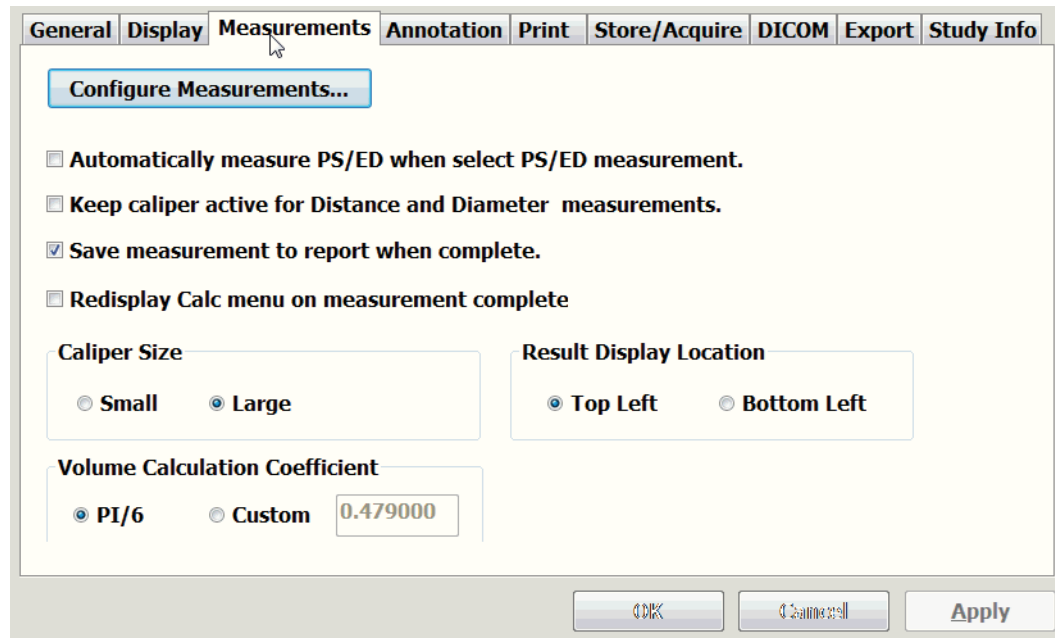
When this box is checked, toggling from one split-screen view to the other makes the selected view live.

When the box is not checked, both views remain frozen when toggling from one to the other, until the Freeze button is tapped.

Setting Measurement Defaults

When you tap **Setup**, then tap the **Measurement** tab, the Setup window lets you choose which measurements appear on the menu accessed by the Calc button on frozen images. See [Measurement Sets](#) on page 103 for instructions on how to do that.

The Setup Measurement window also includes controls for choosing the size of the measurement cursor, the tables used in calculating obstetric measurements, and the port used to send measurements to another location.



Setup Measurements Window

Caliper Size

To change the size of the measurement cursor, tap the Small or Large radio button.

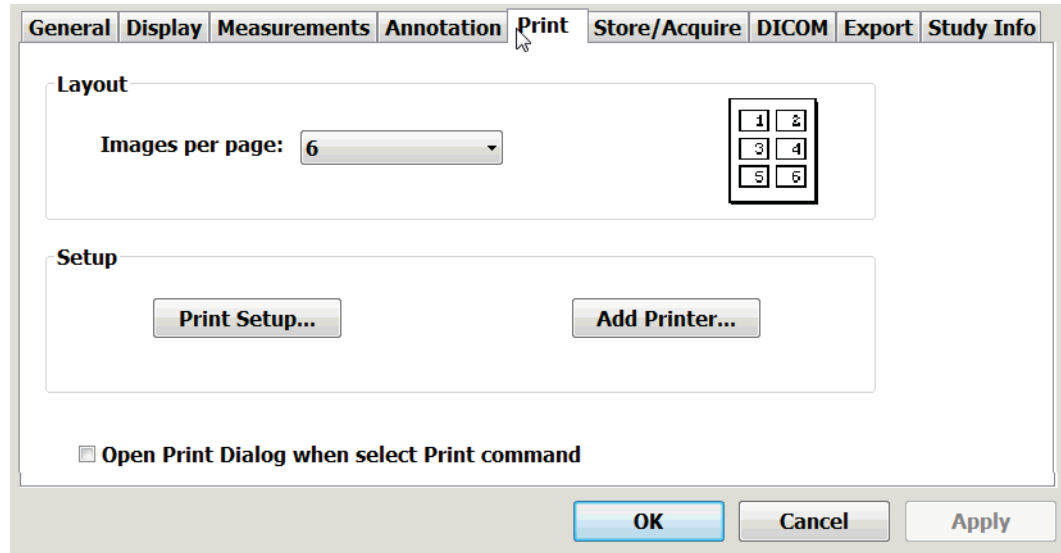
Using Annotation Setup Controls

When you tap **Setup**, then tap the **Annotation** tab, the Setup window offers several controls for different actions and defaults. The Setup Annotation window lets you control which anatomy labels are available when you tap the Text button. This is explained in detail in [Predefined Text](#) on page 61 and [Custom Predefined Text](#) on page 61.

The Setup Annotation window also lets you control which body markers are available when you tap the Body Marker button. This is explained in detail in [Using Body Markers](#) on page 66.

Setting Print Defaults

When you tap **Setup**, then tap the **Print** tab, the Setup window lets you add and configure printers and choose how many images will print on a page.



Setup Print Window

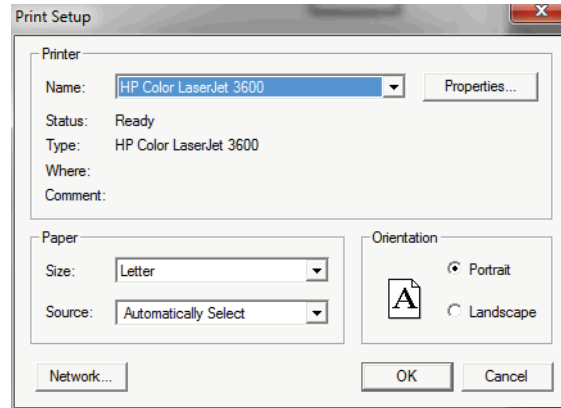
To set the number of images that print on a page, tap the triangle next to the Images per page: field, then select a number from the menu.

To add a printer:

1. Tap the **Add Printer...** button.
The Windows Add printer window opens.
2. Select the printer you want to use, then tap **Add**.

To Set the printing defaults:

1. Tap the **Print Setup...** button.
The Print Setup window opens.



Print Setup Window

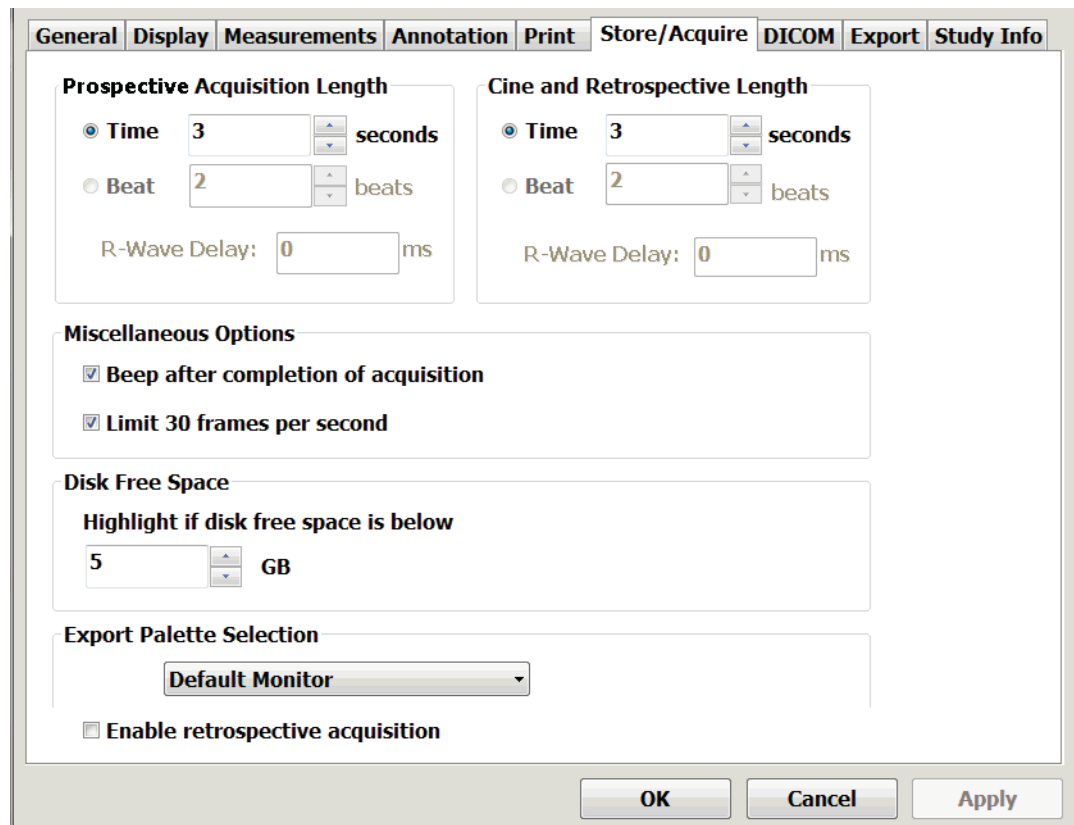
(This illustration is an example; the details of the window depend on the printer you have selected.)

2. Select the **paper size**, orientation, etc.

For detailed instructions, refer to the printer manufacturer's documentation.

Setting Storage and Acquisition Defaults

When you tap **Setup**, then tap the **Store/Acquire** tab, the Setup window offers several controls for different actions and defaults.



Setup Store/Acquire Window

Prospective Acquisition Length

This lets you set the length for prospective loops. See [Saving Loops](#) on page 55.

Cine and Retrospective Length

This lets you set the length for loops captured when the image is frozen.



Note: Stress Echo option is not available in the MSK module. Consequently, the Beat and R-Wave Delay controls in the Store/Acquire tab are disabled.

Disk Free Space Warning

When the unused space on the computer hard disk becomes less than the value set with this control, the Disk free space indicator on the Imaging window turns yellow. You should delete unneeded files to make more room on the disk for new studies.

To set the disk free space warning threshold, tap the up or down arrow next to the GB field until the desired value displays, then tap OK or Apply.

Export Palette

You can choose the export palette to match the computer, but this is seldom necessary. The correct palette is set at the factory.

Miscellaneous Options

Acquisition Beep

You can enable and disable a beep sound triggered by the completion of an image or loop acquisition.

To enable or disable the acquisition-complete beep, tap the Beep after completion of acquisition checkbox.

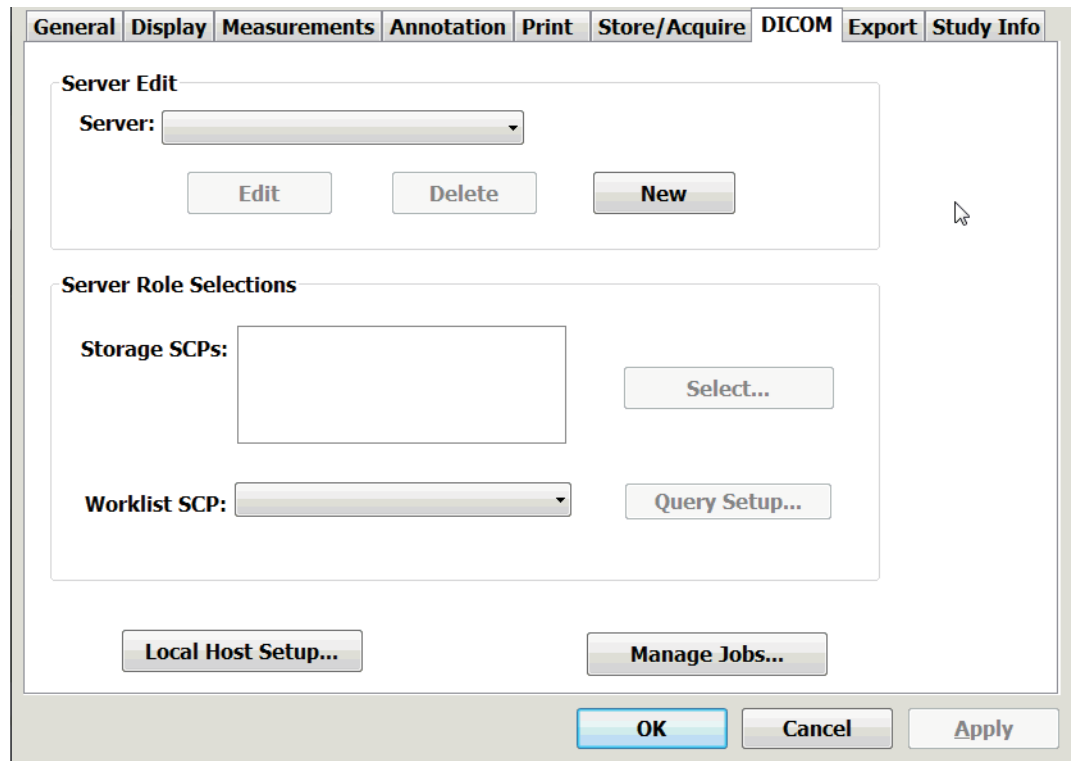
Frame-Rate Limit

This control toggles a 30 frames per second limit on the frame rate. Enabling the limit results in smaller study files.

Setting DICOM Defaults

When you tap **Setup**, then tap the **DICOM** tab, the Setup window offers controls for connecting to and using DICOM networks.

Connecting and configuring DICOM networks requires the involvement of your System Administrator.



The screenshot shows the 'Setup DICOM Window' with the following components:

- Navigation Tabs:** General, Display, Measurements, Annotation, Print, Store/Acquire, **DICOM**, Export, Study Info.
- Server Edit:** A dropdown menu labeled 'Server:' with 'Edit', 'Delete', and 'New' buttons below it.
- Server Role Selections:** A section containing:
 - 'Storage SCPs:' with an empty text box and a 'Select...' button.
 - 'Worklist SCP:' with a dropdown menu and a 'Query Setup...' button.
- Buttons:** 'Local Host Setup...' and 'Manage Jobs...' are located below the role selection section.
- Footer:** 'OK', 'Cancel', and 'Apply' buttons.

Setup DICOM Window

Server Edit

This set of controls lets you define the DICOM server identity.

Server Role Selections

This section is where you define SCPs.

Local Host Setup

This button opens a dialog box where you can enter data required for communication with a DICOM server.

Manage Jobs

This button opens a window where you can monitor the status of items sent to the DICOM network.

Setting Study Information Defaults

You can configure the default entries for institution and doctor names, as well as other types of information that appear on study reports. These operations are described in [Working With Patient Information](#) on page 40.