

TOSHIBA



**VIAMO
SONOSET**

- ‘Viamo’s innovative SonoSet™ function allows you to carry out examinations conveniently by simply executing programmable protocols step by step’



How to Position Feature

- Targeted to departments that want to streamline workflow
- Creates a streamlined and flexible workflow for Physicians
- Enables execution of a series of steps using a single control



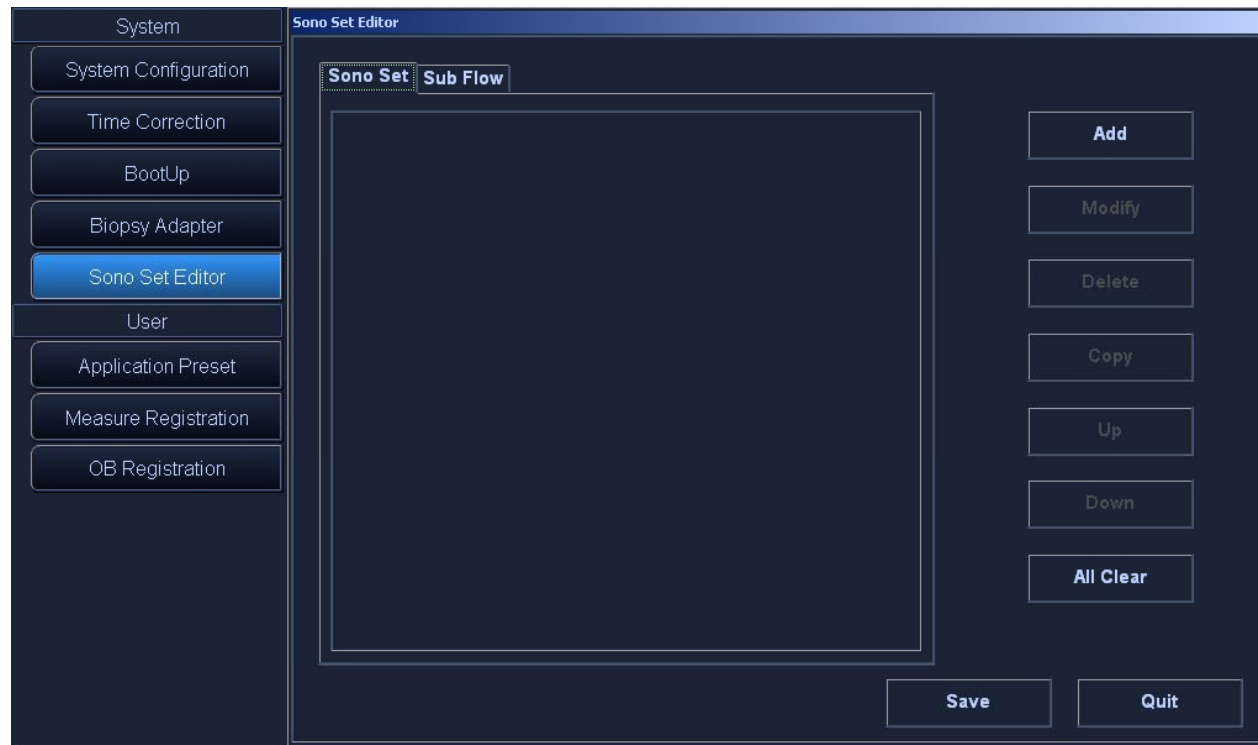
How to Program

- Workflow programmed in preset menu
 - SonoSet Editor
- Create series of steps to be executed
- Can be paused (need to program key)



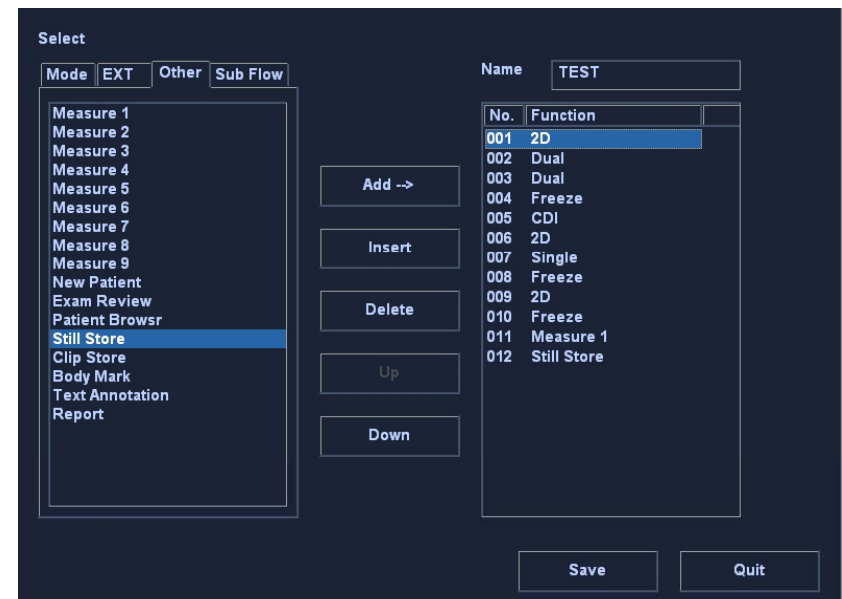
1. Program Sonosets

- Menu- Preset
- Sono Set Editor
- Select Add



How to Program

- Enter Name of Protocol
- Select steps/option & Select Add
(need to add 2D to unfreeze)
- Steps can be repositioned using up/down controls
- Save changes and exit



Functionality

Mode	Ext	Other	SubFlow
Freeze	Print	Measure 1	Mode options
2D	Report Print	Measure 2	Ext options
Single		Measure 3.....9	Other options
Dual		New Patient	
M		Exam Review	
PW		Still Store	
CDI		Clip Store	
Power		Body Mark	
Update		Text Annotation	
ADF		Report	



Program only a few generic steps:

- Color
- 2D
- Freeze
- Measure
- Still Store



2. Program UF key

1. Menu-Maintenance
2. Config Tab
3. Select UF key
4. Enter Password
5. Click on box associated with control- Measure Edit
6. Select Other tab
7. Select Sono Set Execute
8. Click OK
9. Save changes and exit



3. Program Touch Screen

- Select Menu
- Select Control Panel Customization
 - Select Icon in Application area to be replaced
 - In the Common Customize Box select delete
 - Select Sonoset from menu and insert
 - Save changes and quit/exit



How to Use with UF key

- Select SonoSet from Touch Screen
 - Protocol list displayed
- Press User Function key to activates steps
(NEXT step to be activated is highlighted)

** Selections can also be executed on touch screen*



How to Use

- Arrows can be used to move through protocols
- Able to deviate from protocol
- To 'end' protocol before executing all steps, press the X to close

